

LIGHT STEEL FRAME
CONSTRUCTION



01

BESTEEL

Build with a lightweight steel frame.

“

Choosing a beSteel steelframe, means building **quickly, efficiently** and **sustainably**, with a light, strong solution.



At beSteel you'll find a remarkably **sustainable alternative for traditional construction methods**. We're specialized in calculating and producing cold-formed steel profiles for any type of construction. That are suitable for all types of construction projects.

Our steel frame structures are high-quality solutions for new construction and renovation; houses, apartments, elevations, etc. beSteel speeds up, simplifies and perfects the entire construction process thanks to digitalization and industrialization.

Our clients are mainly construction companies, contractors and real estate promoters. We offer them complete support during their construction projects, from the stability study to manufacturing, including the design of the load-bearing framework and the digitalisation of plans.

beSteel, a Belgian company, is part of The BuildUp Company and is active in Europe, the Caribbean and the French overseas territories.

beSteel in a few numbers.



+660
PROJECTS



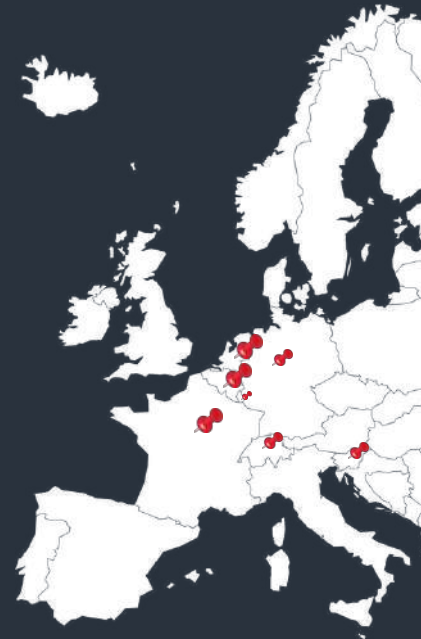
100%
MADE IN BELGIUM



+11
COUNTRIES

 47%	 15%	 13%
 20%	 5%	

OTHERS: MARTINIQUE, GUADELOUPE, SLOVENIA, SAINT-MARTIN, GERMANY, LUXEMBOURG



Sustainable steel frame construction company specializing in precise, fast, and lightweight offsite production.



Cost and Time Efficiency: Save resources through streamlined off-site manufacturing.



Sustainable Excellence: Delivering high-quality construction with minimal environmental impact.



10 years expertise: A expertise and a reliable support from the start of your project



Reliable partner network

Advantages



SPEED

Save 50% of time on site compared to traditional construction.



STURDINESS

Despite its lightweight design, the frame is exceptionally strong and can support buildings up to six stories high.



LIGHTNESS

Lightweight steel weighs 4 times less than wood construction. Ideal for vertical extension or construction on soft soil!



A CLEAN SITE

Thanks to the offsite production, nothing has to be cut on site. This way we reduce waste to absolute zero.



ARCHITECTURAL FREEDOM

The architect's freedom is totally preserved. We adapt our steel structure completely to your design. From modern to classic structures, anything is possible.



SUSTAINABILITY

Our production process is based on the cradle-to-cradle philosophy. All materials can be fully recycled and reused. We also provide bio based hybrid solutions.



100% BY THE BOOK

Light steel frames fully comply with the rules and requirements for fire resistance and thermal and acoustic insulation. Thanks to prefabrication, we can promise you a flawless end result.

Applications.

Residential, commercial, collective, modular... Steel frame construction can handle anything while offering complete architectural freedom.



Light steel frame building structures consist of **cold-rolled steel profiles that are assembled into various panels that form 2D modules.**

This revolutionary method simplifies the entire construction process for the contractor, architect, and client.

Market leader since 2015, beSteel differentiates itself through its expertise and know-how at the cutting edge of technology and in line with the latest regulations. As a result, beSteel's production procedures and methods are certified to European (CE) standards.



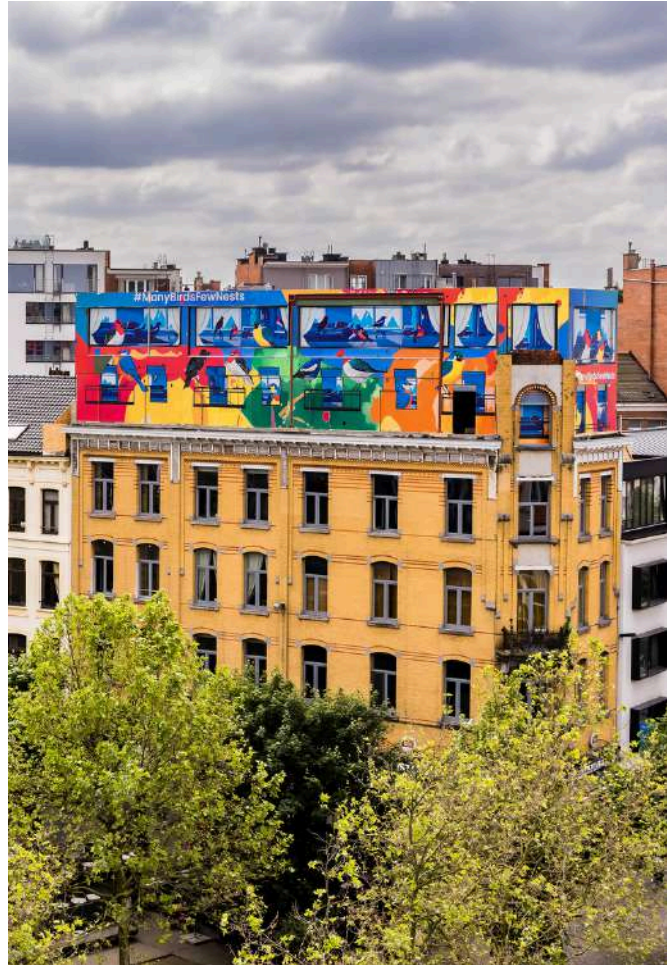
INDIVIDUAL HOUSES

Steel construction is the ideal base for a house and is perfectly able to answer the increasing requirements for energy and living comfort.



BUILDINGS

Steel structures are perfect for constructing multi-storey buildings for housings, commercial or industrial purpose.



VERTICAL EXTENSIONS

Steel construction is lightweight and fast, making it ideal for vertical expansions on existing buildings and for construction on surfaces with lower load-bearing capacity.

ENGINEERING OFFICE AND DIGITAL EXPERTISE

Our project managers oversee every project from A to Z and ensure smooth communication through digital portals. Together with our internal team of architects, engineers, and designers, they guarantee custom steel frame structures and stability calculations in accordance with the Eurocodes. In this way, we ensure both quality and delivery deadlines.

03 OUR PRODUCTS

Our products to fit your needs.



FLATPACKED

Steel profiles unassembled, reducing transport volume and allowing for easy handling.

With detailed assembly instructions, packaged screws, end caps, and panel plans, on-site assembly becomes straightforward, efficient, and adaptable to any project conditions.

- Easy transportation
-



FABRICATED

Pre-Assembled for Maximum Efficiency

Steel profiles delivered pre-assembled, saving time and effort on-site. With precise factory assembly, this solution ensures high-quality results, reduces labor requirements, and accelerates project timelines.

- Precision on site
-



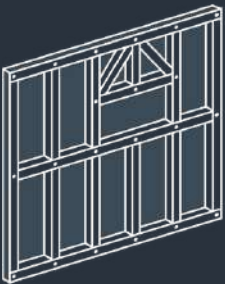
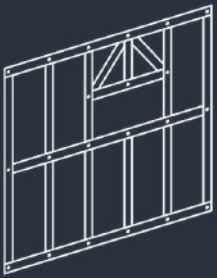
FASTWALL

Quick and Easy Wall Installation

Prefabricated wall system designed for rapid and seamless on-site installation. Delivered ready-to-install, it minimizes construction time while ensuring exceptional quality and durability.

- Speed and efficiency

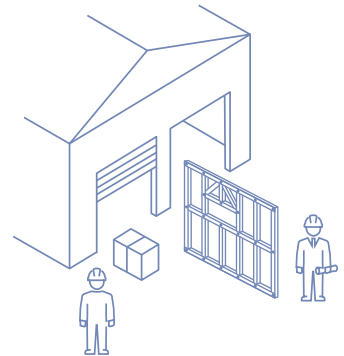
From design to site.



1

INTERNAL ENGINEERING OFFICE

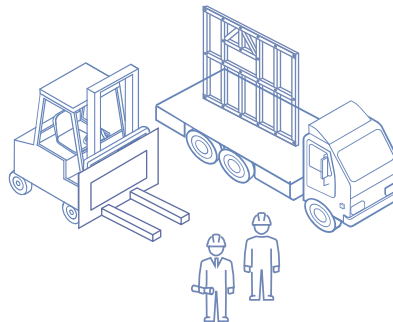
We digitally design your steel frame project. We provide you with a 3D model, stability calculations and drawings in full compliance with Eurocodes.



2

OFFSITE PRODUCTION AND ASSEMBLY

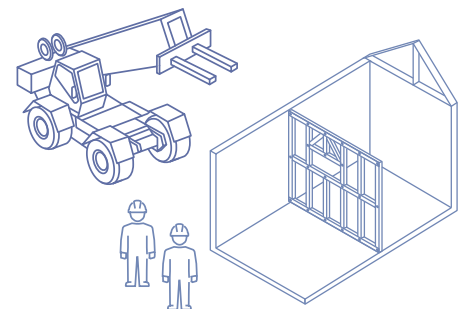
Precise production and assembly in our factory, under controlled conditions to guarantee the precision and quality of our product.



3

TRANSPORT

Delivery is organized according to the construction sequence to ensure smooth assembly.



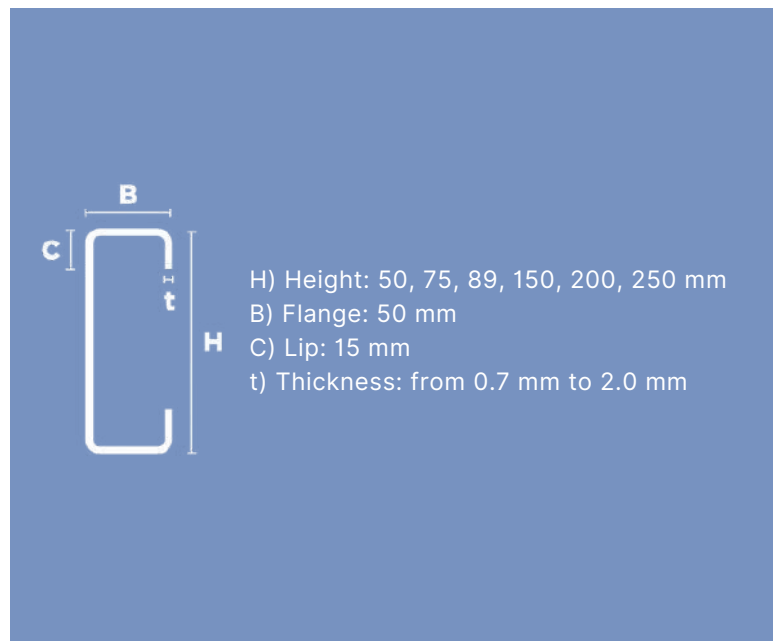
4

INSTALLATION ON THE SITE BY THE CONTRACTOR

Quick, easy, and labor-saving installation. Technical assistance from our beSteel Certified Advisor is available.

A sustainable material.

beSteel profiles are crafted from ArcelorMittal Magnelis® steel, which offers exceptional corrosion resistance and enhances the durability of steel structures, thanks to its superior protection against scratches and environmental influences.



SCREW HOLE

For a quick, simple and precise assembly.



SERVICE HOLE

For electrical applications.



INDEX HOLE

For connections with bolts.



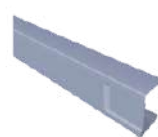
WEB NOTCH

Profiles fit together horizontally.



LIP NOTCH

For mounting profiles easily.



SWAGE ENDS

For precise fixing of profiles.



UTILITY SERVICE HOLE

Hole of 120-140 mm for sanitary elements and ventilation.



PRINT ID LABEL

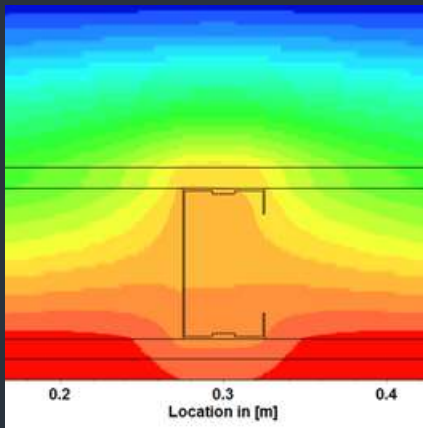
For time-saving, well-organized installation.

06 TECHNICAL SPECIFICATIONS

Meeting the highest standards.

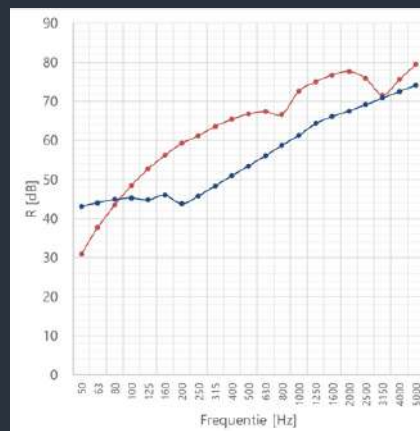
THERMAL INSULATION

A building in perfect harmony with EPB requirements. You save in wall thickness and gain surface.



ACOUSTIC INSULATION

Enjoy high acoustic comfort. We supply a supportive test on the site.

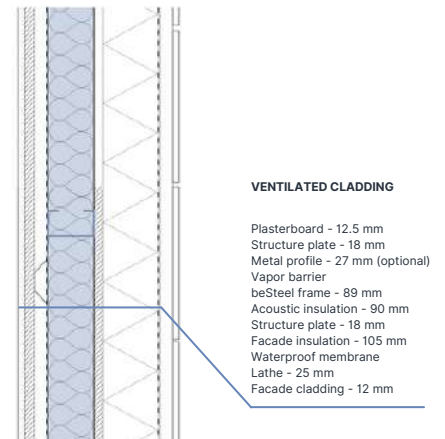
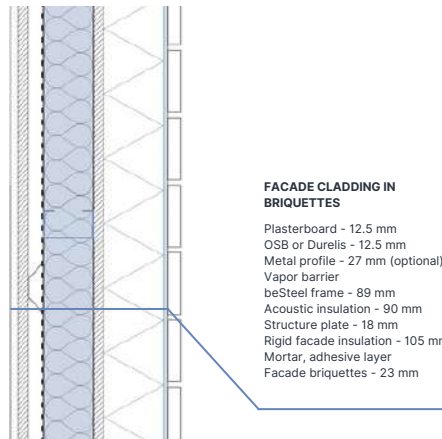
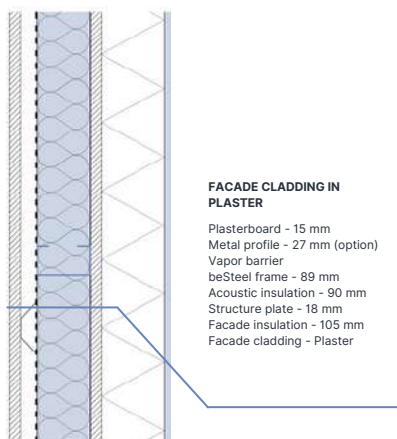


FIRE RESISTANCE

Depending on the selected coating, beSteel structures achieve a resistance of REI 120.



CLADDING, PLATING AND INSULATION TYPES CAN BE ADAPTED TO REACH THE DESIRED STANDARDS



07

SUSTAINABILITY IS PRIORITY

Circular construction method.



Reducing the carbon footprint of the construction industry.

Compared to traditional construction methods:

REDUCES CARBON EMISSIONS BY UP TO 50%.

REDUCES WASTE PRODUCTION BY UP TO 80%.

REDUCES THE NEED FOR ON-SITE TRANSPORT.



STEEL

42% recycled content.

Steel structures are **100% recyclable**

Steel structures can be dismantled without compromising quality.



OFFSITE MANUFACTURING

Minimal waste.

Reduced transport emissions.

50% faster construction.

On the road to carbon neutrality.

CRADLE TO CRADLE

Steel construction is one of the few methods that offers a clear answer to the need for circular construction.

This means that steel structures are 100% recyclable and offer a solution that can be dismantled without compromising quality.



XCARB® - TOWARDS A CARBON NEUTRAL STEEL

beSteel is convinced that steel has an essential role to play in helping society to decarbonize, and that it will be a large part of the solution to this problem.

beSteel supports the XCarb program, ArcelorMittal's ongoing global initiative for innovation in steel production with the goal of producing carbon-neutral steel by 2050.



TRADITIONAL CONSTRUCTION OR LIGHT STEEL CONSTRUCTION? THE OBVIOUS ANSWER.

It may come as a surprise to you, but it takes more steel (reinforcement) to build reinforced concrete than steel-frame.

Cold bending of sections improves steel's performance and load-bearing capacity. This results in a solution that's efficient in terms of raw material use, and environmentally friendly thanks to its ease of disassembly and recycling at end-of-life.

08 RELIABLE PARTNERS

Our network of partners.

At beSteel we surround ourselves with reliable, high-quality and experienced construction partners. Together we make steel frame construction stand out!

Are you a contractor, architect or specialized consultant in steel frame construction?

Be sure to contact us! Who knows, you might be the next indispensable link in our network.



beSteel
CERTIFIED CONTRACTOR



beSteel
CERTIFIED ARCHITECT



beSteel
CERTIFIED ADVISOR

09

OFFSITE CONSTRUCTION

Offsite construction to deliver excellent quality.

“

Offsite construction can **reduce** the need for **skilled labor on site by 60%**.

WHAT'S OFFSITE CONSTRUCTION?

Offsite construction involves the **planning, design, fabrication, and assembly** of building components in a controlled factory environment before they are transported to the construction site for final installation.

This method offers numerous advantages over traditional construction.

WHAT ARE THE ADVANTAGES?

- Increased efficiency.
- Increased quality.
- Increased speed of installation.
- Reduced carbon footprint.
- Solve lack of qualified labour force.



Simplify your building experience.

BESTEEL IS A PROUD MEMBER OF THE BUILDUP GROUP

BUILDUP IS 3 BRANDS TODAY AND OFFERS:

Tailor-made prefabricated construction solutions ranging from lightweight steel frame with **beSteel** to energy-efficient renovations with **Retrofitt** and modular buildings with **Kitt**, with a focus on **architectural freedom, industrialisation, digitisation and BIM.**

BUILDUP'S MISSION:

Bringing a positive impact to the global humanitarian challenges through the built environment.



ULTRA FAST CONSTRUCTION

Off-site production and assembly, avoiding delays on site thanks to controlled conditions for fast, precise on-site assembly.

SUSTAINABLE AND LIGHTWEIGHT

4x time lighter than wooden construction methods. A hybrid module made of light steel helps to reduce the CO2 impact of the construction sector.

360° EXPERTISE AND DIGITAL FOLLOW-UP

Production of lightweight steel structures and complete monitoring. So that your project meets the most strict technical and stability requirements, all in-house.

CONTACT US

sales@be-steel.eu

www.be-steel.eu

Niewlandlaan 39 (B224)
3200 Aarschot
Belgium

**SCAN THE CODE FOR MORE ABOUT
OUR PRODUCTS AND SOLUTIONS**

